

# Komelinidne Lilianae

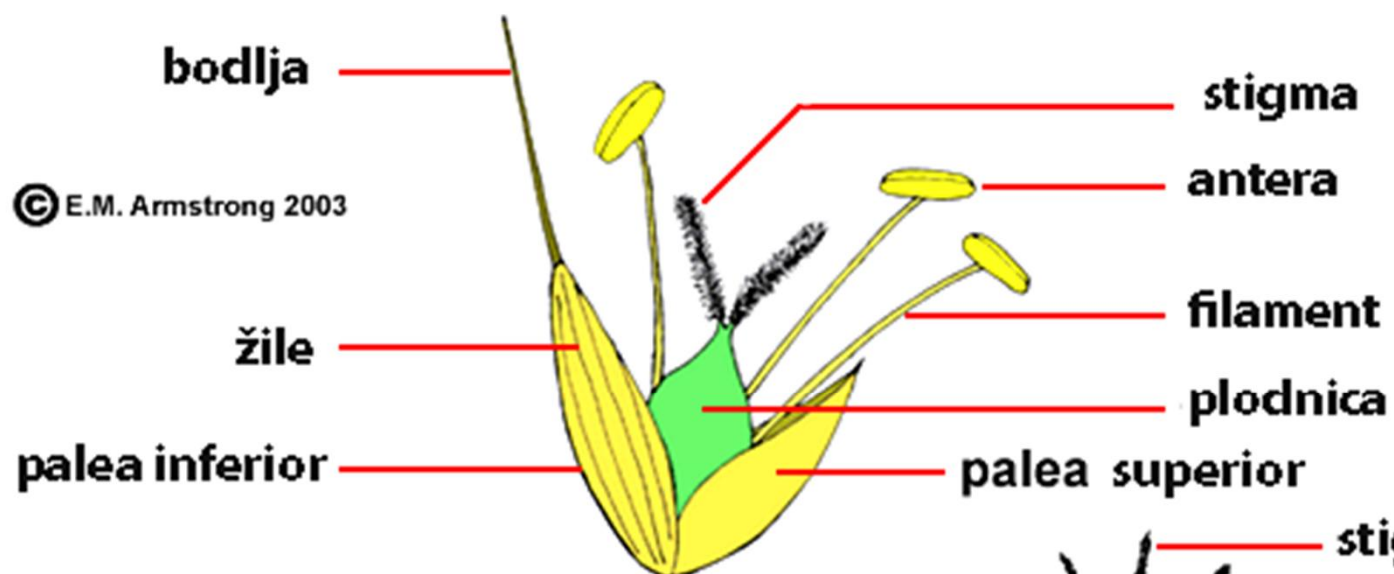
Arecales (Arecaceae)

Commeliniales (Commelinaceae)

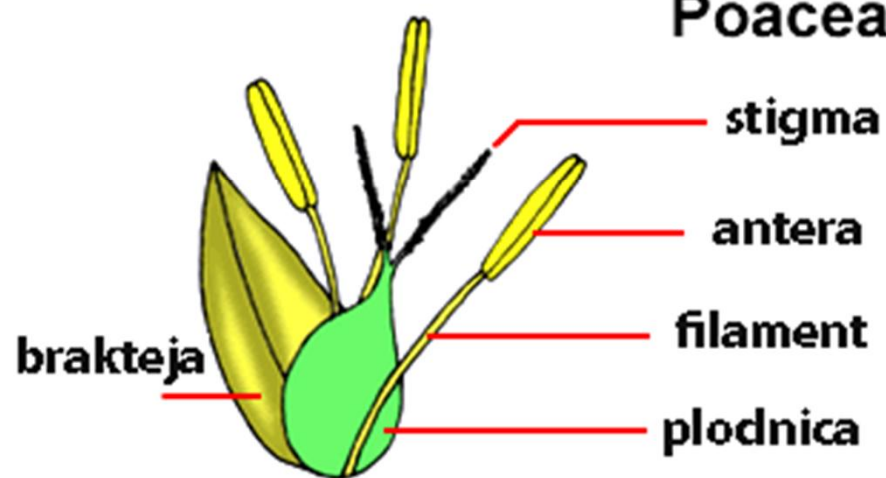
Poales (Bromeliaceae, Poaceae, Cyperaceae,  
Juncaceae, Sparganiaceae, Typhaceae)

Zingiberales (Cannaceae, Musaceae, Zingiberaceae)

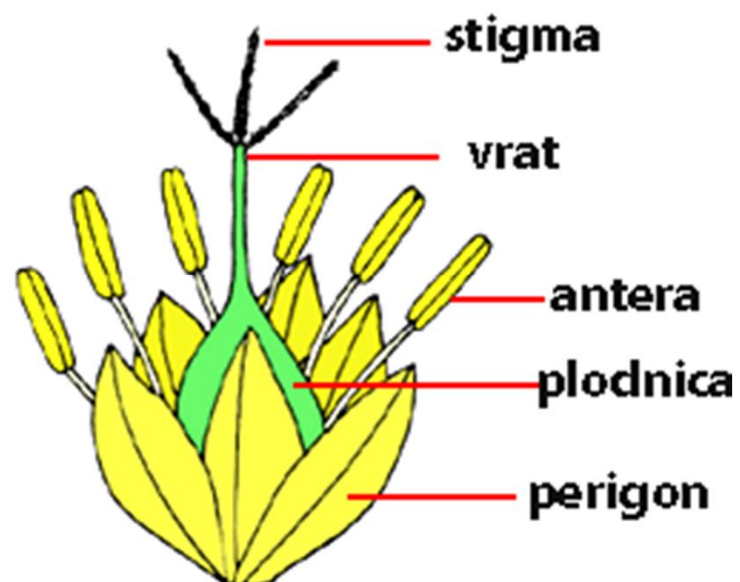
Nativni predstavnici



**Poaceae**



**Cyperaceae**



**Juncaceae**

# Juncaceae



**Cvast  
terminalna**

**Juncus articulatus**

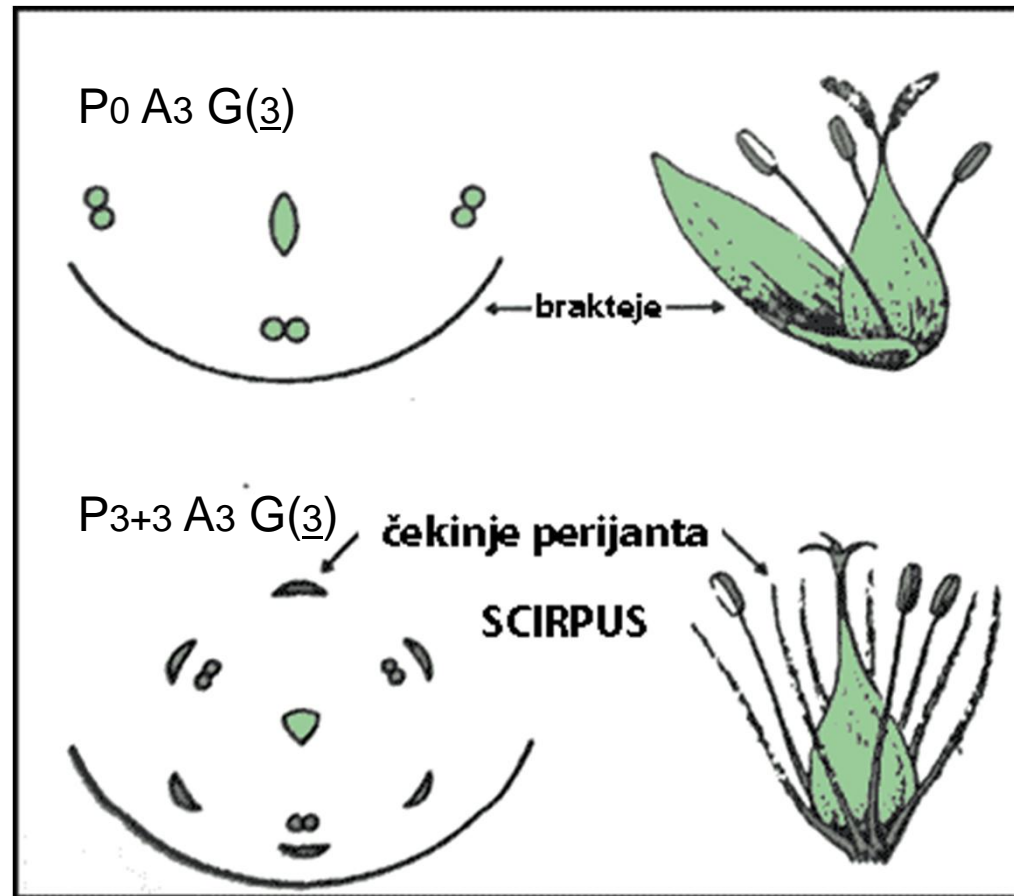
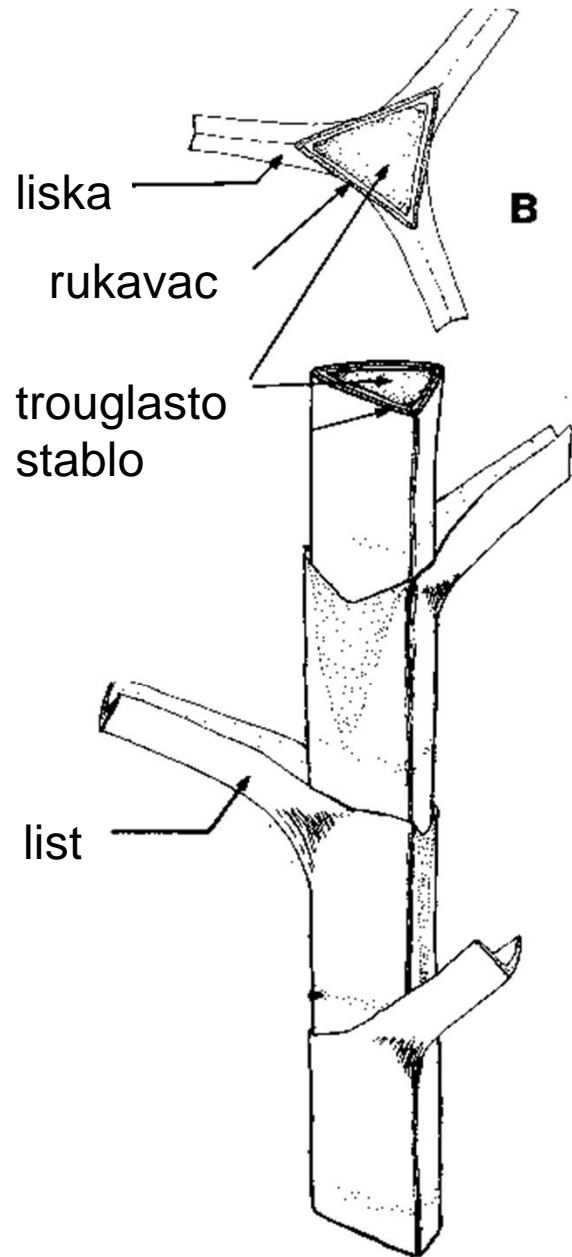
1 cm

**Juncus effusus**

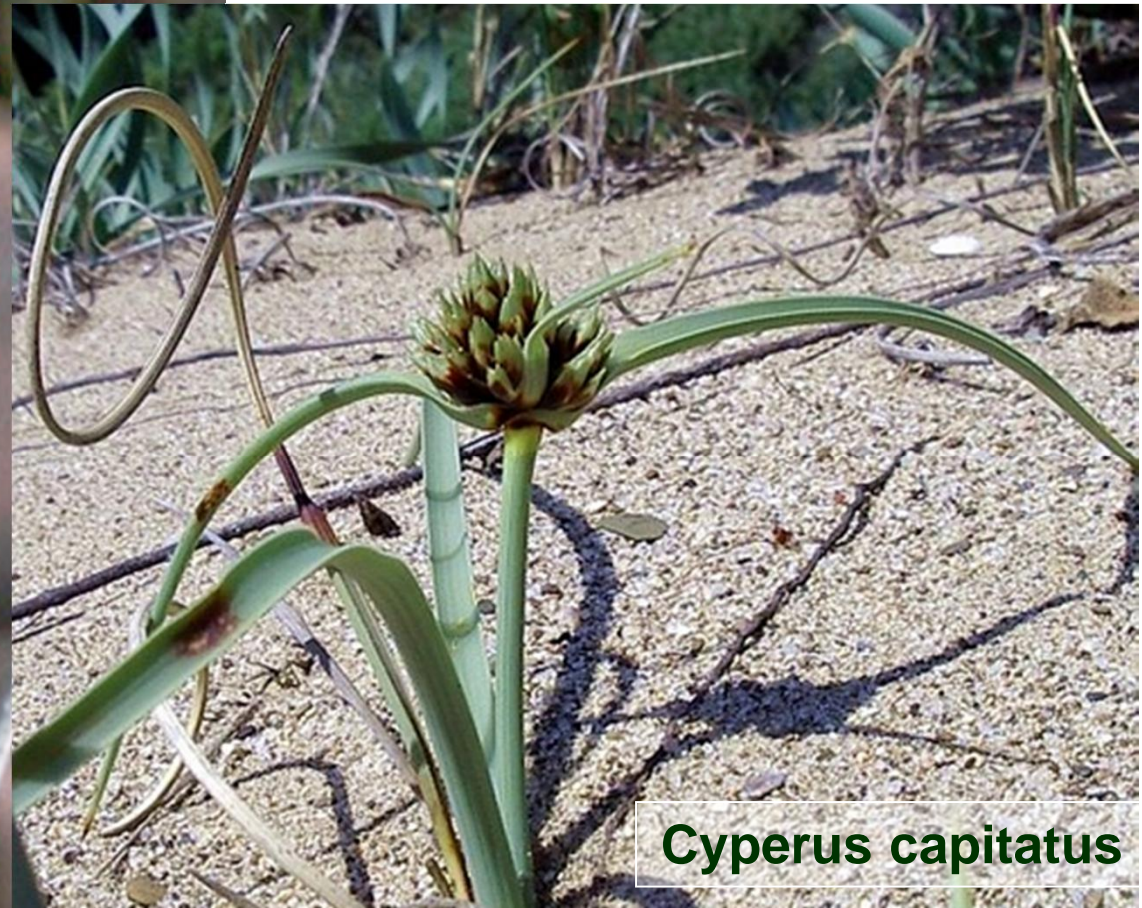
**Cvast  
prividno  
terminalna, tj.  
nadvisuje je  
brakteja koja  
liči na stablo**



# Cyperaceae



**Schoenus nigricans**



**Cyperus capitatus**





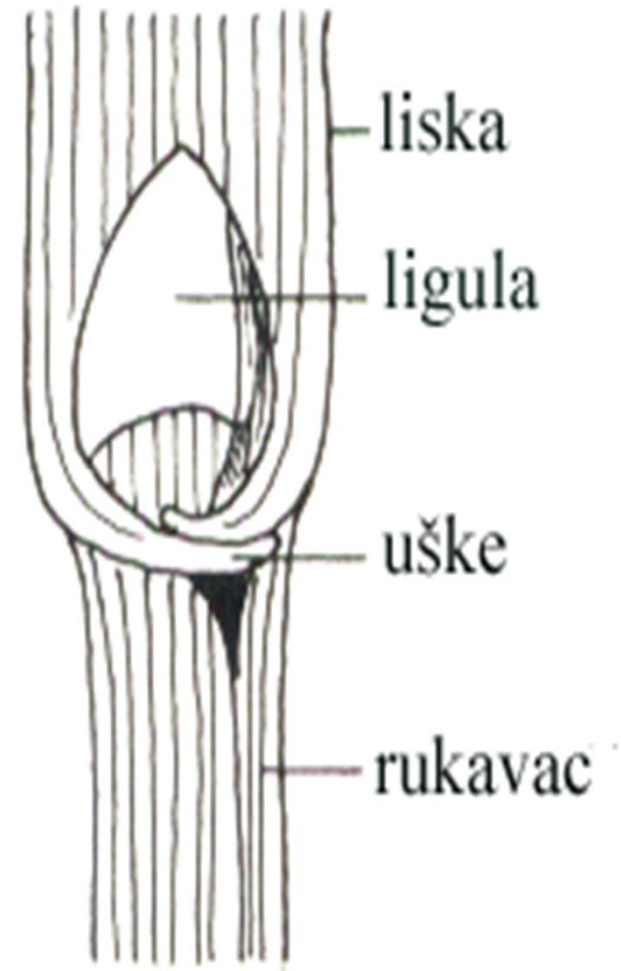
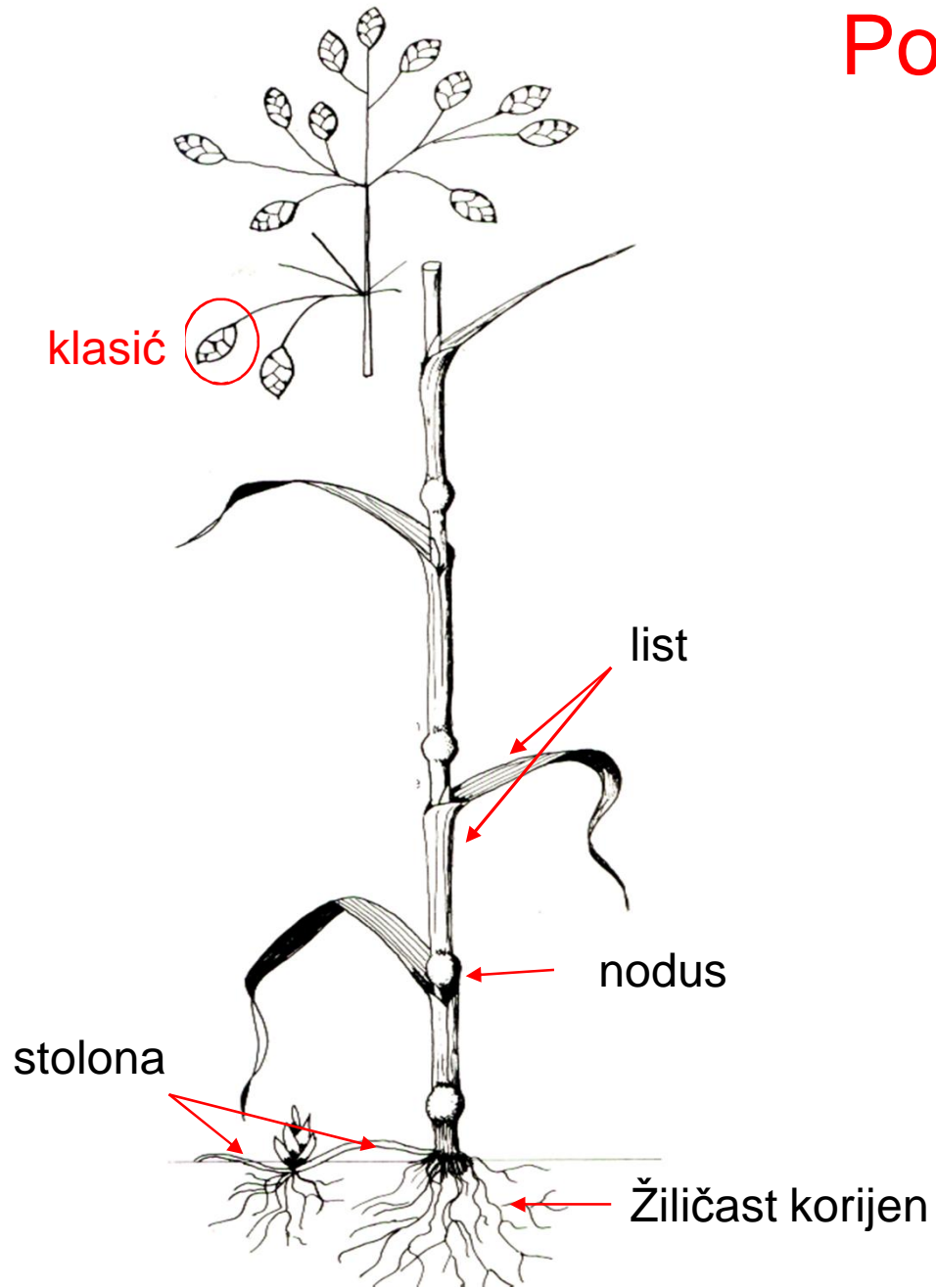


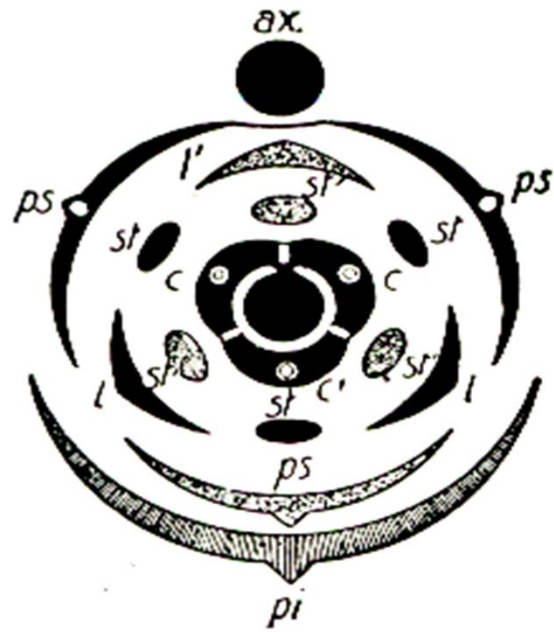
A close-up photograph of the inflorescence of a Carex divulsa plant. The inflorescence is a spike-like structure with several clusters of small, light-colored flowers. The background is a blurred green, suggesting foliage.

**Klasići mješoviti,  
gornji cvjetovi muški**

**Carex divulsa**

# Poaceae



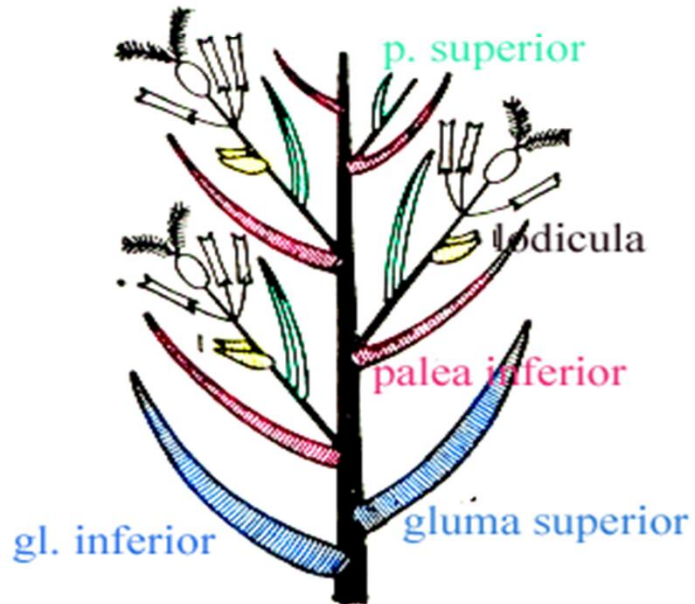


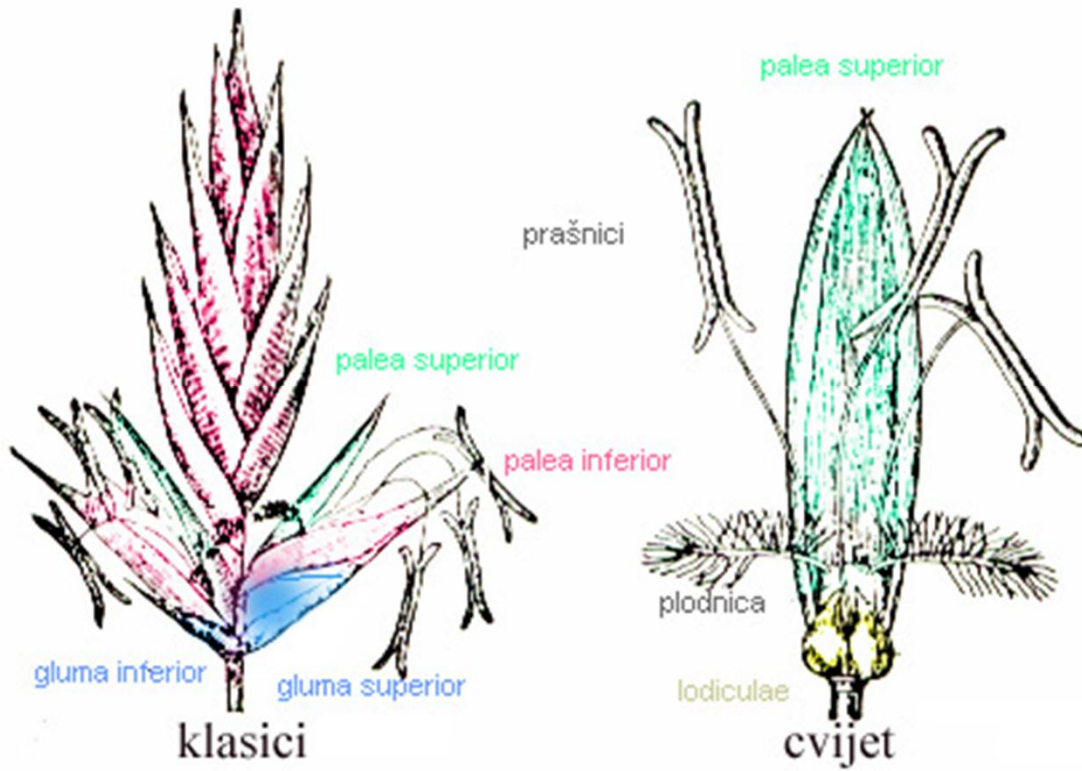
Treminologija po flori Hrvatske:

glume = pljevice

palea inferior = obuvenac

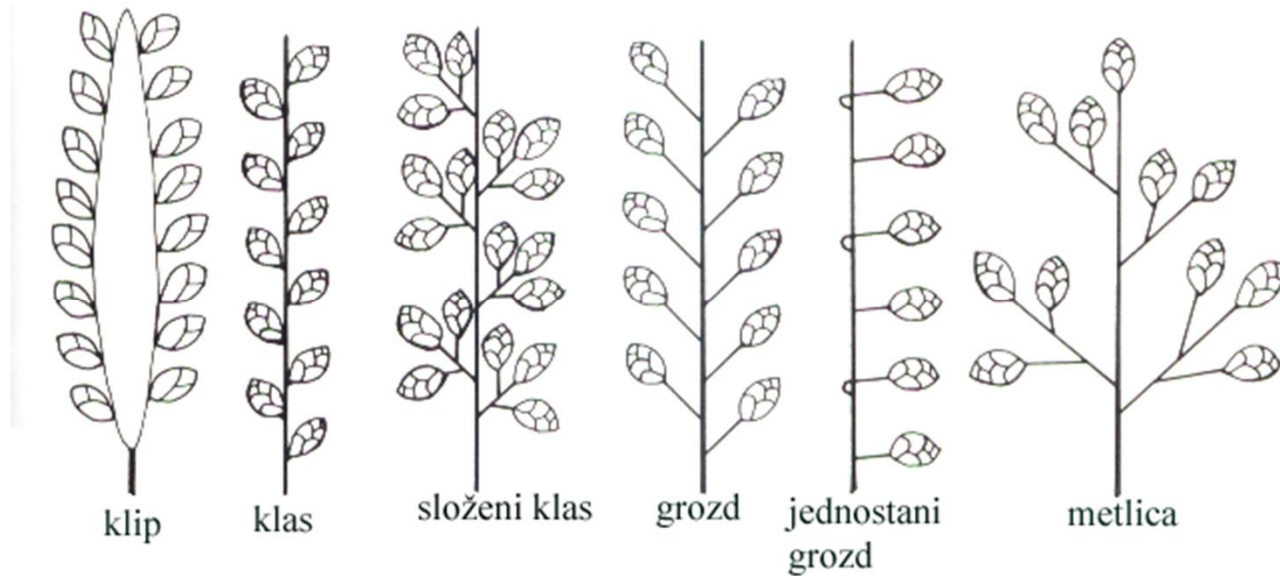
palea superior = košuljica



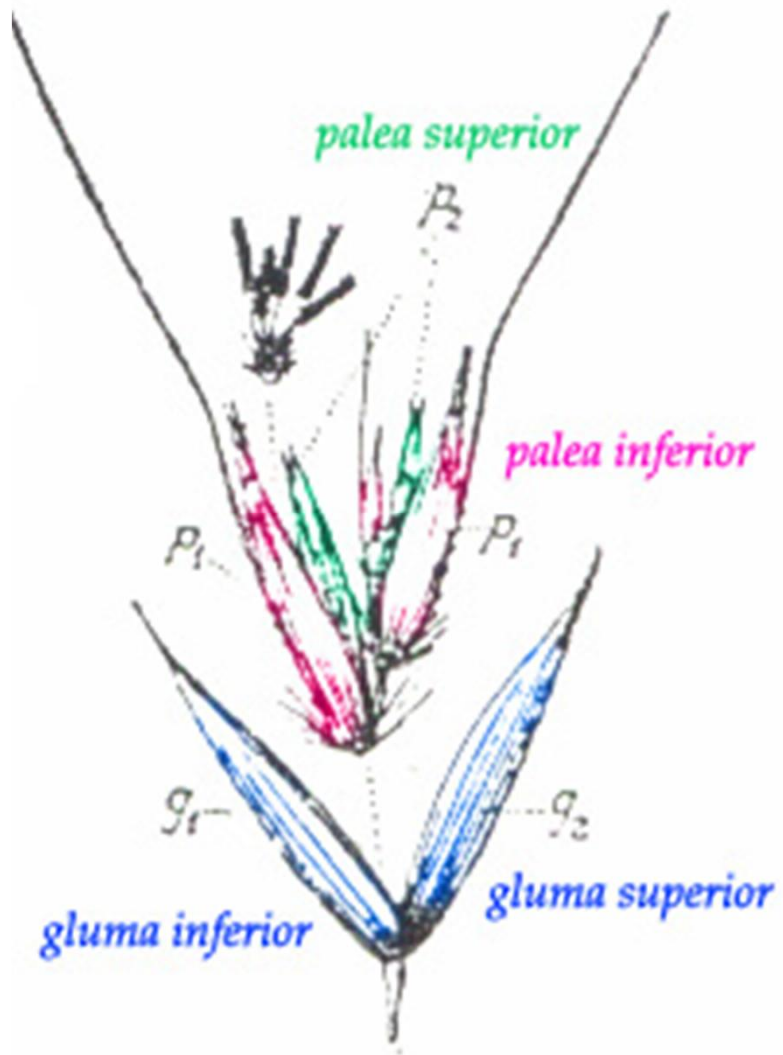


Klasić:  
 gluma inferior + gluma superior +  
 palea inferior + cvijet (palea  
 superior, lodikule, 3 prašnika,  
 plodnica)

Tipovi cvasti



# Avena sp.



# Klasići jednopoloni

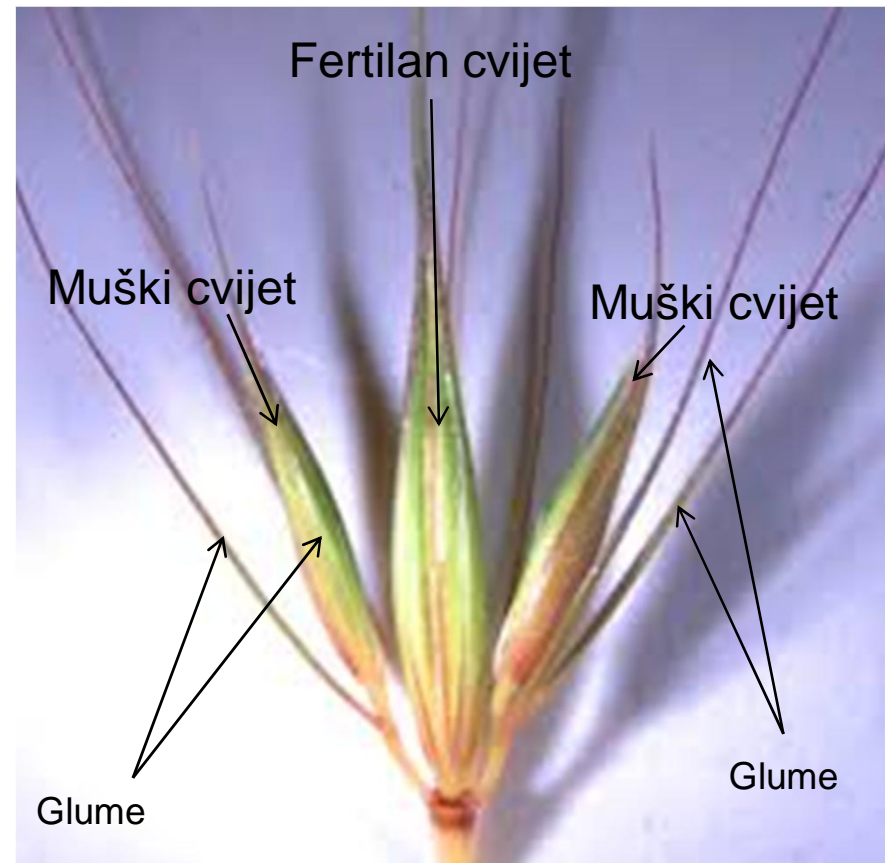


Zea mays

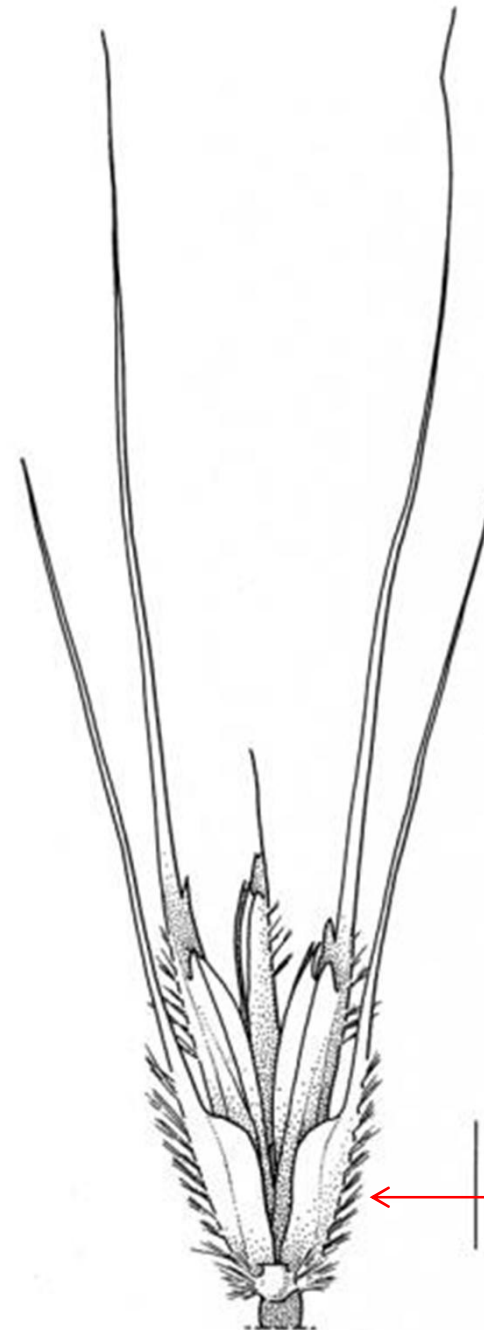
Ženski cvast tipa klipa,  
muška tipa metlice



# Klasići dvopoloni, jednocvejtni



**Haynaldia villosa**



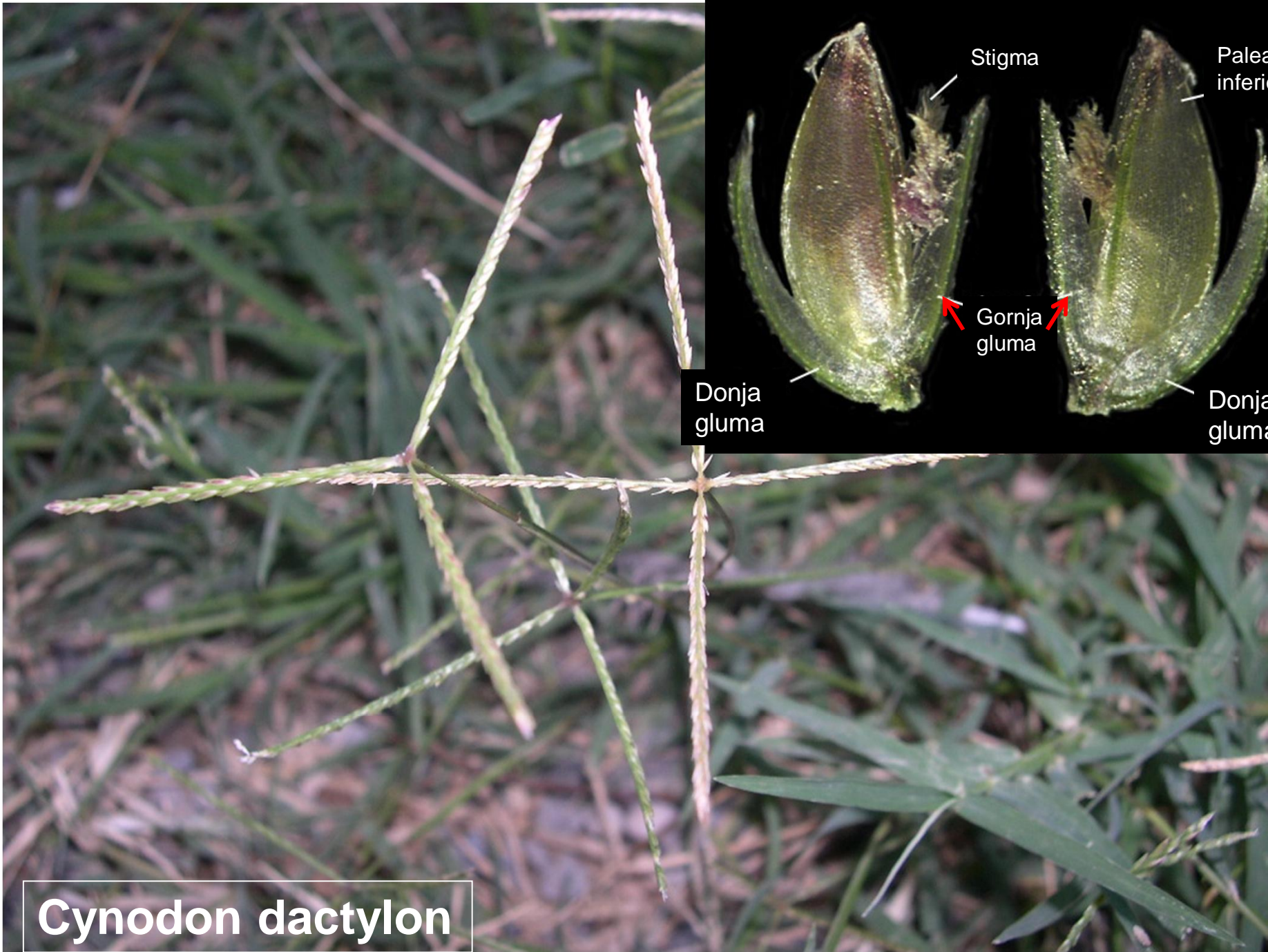
← Glume sa čekinjana





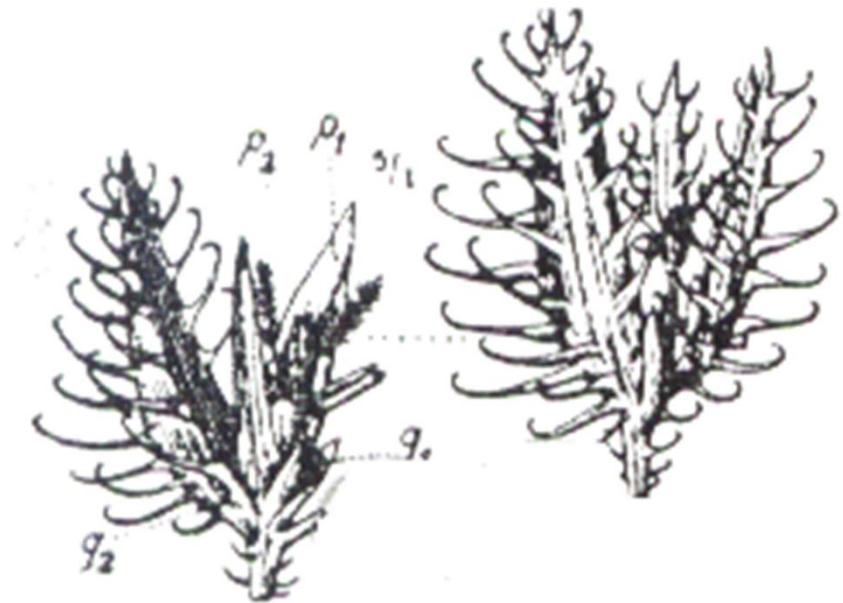
**Gluma (pljevica) nema!!!**

**Leersia oryzoides**



**Cynodon dactylon**

**Tragus racemosus**



**Gluma (pljevica) sa kukastim  
čekinjama!!!**



**Stipa pennata**

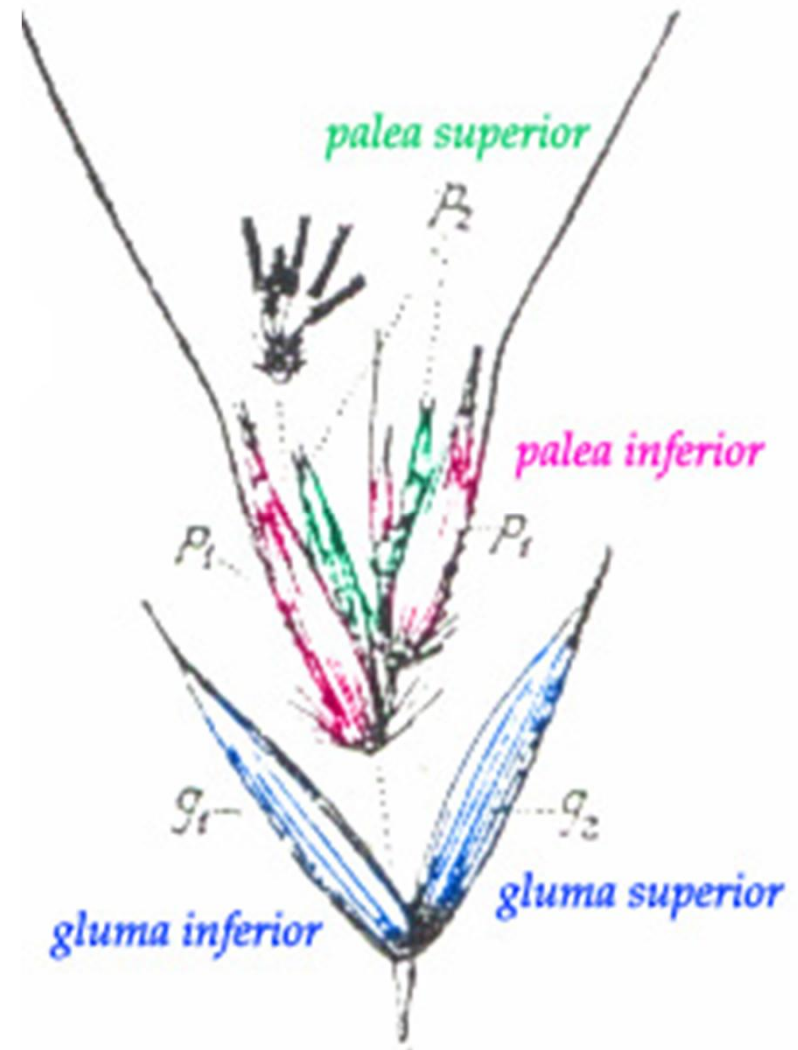


**Melica sp.**

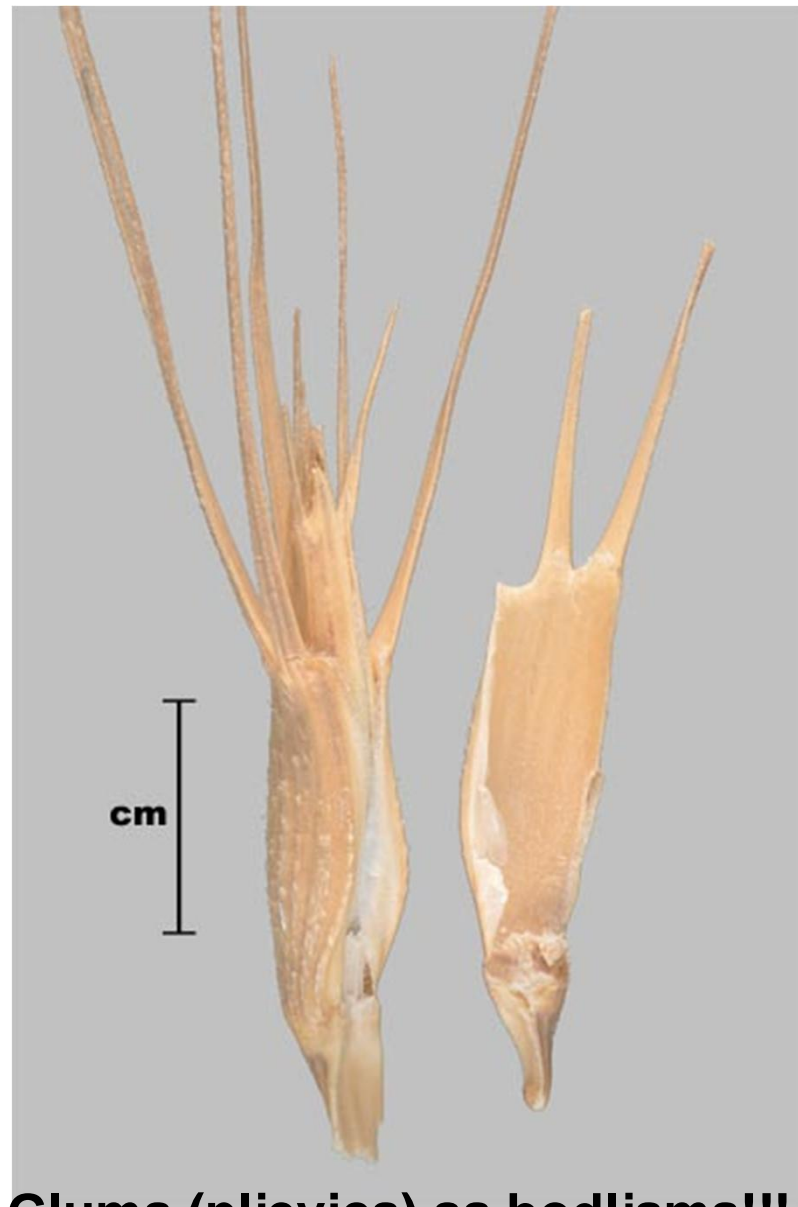


**Klasići osim fertilnog  
sadrže i sterilan  
cvijet!!!**

# Klasići višecvjetni, *Avena* sp.

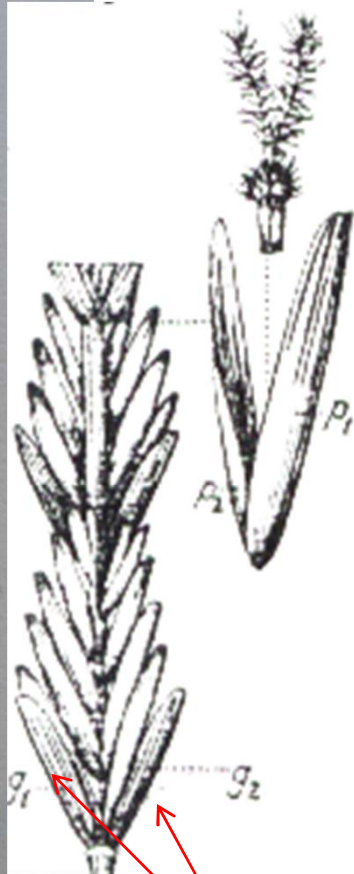


**Aegilops sp.**



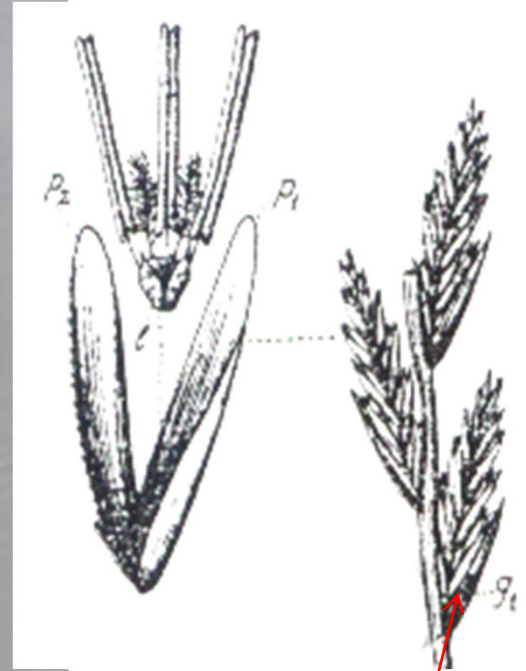
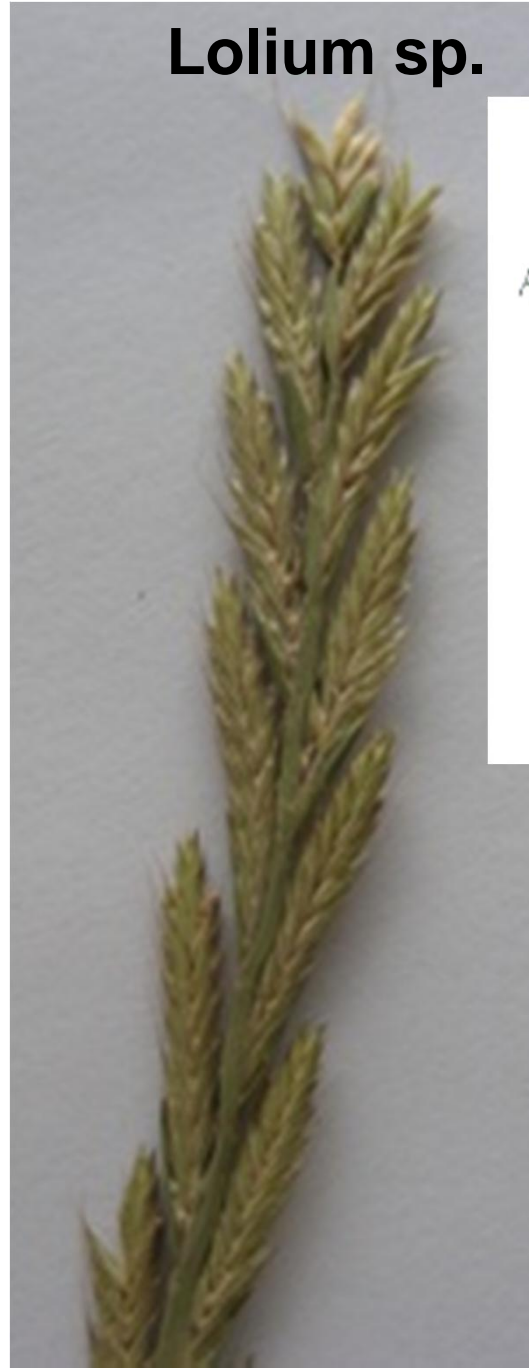
**Gluma (pljevica) sa bodljama!!!**

**Agropyron sp.**



**Glume 2!**

**Lolium sp.**



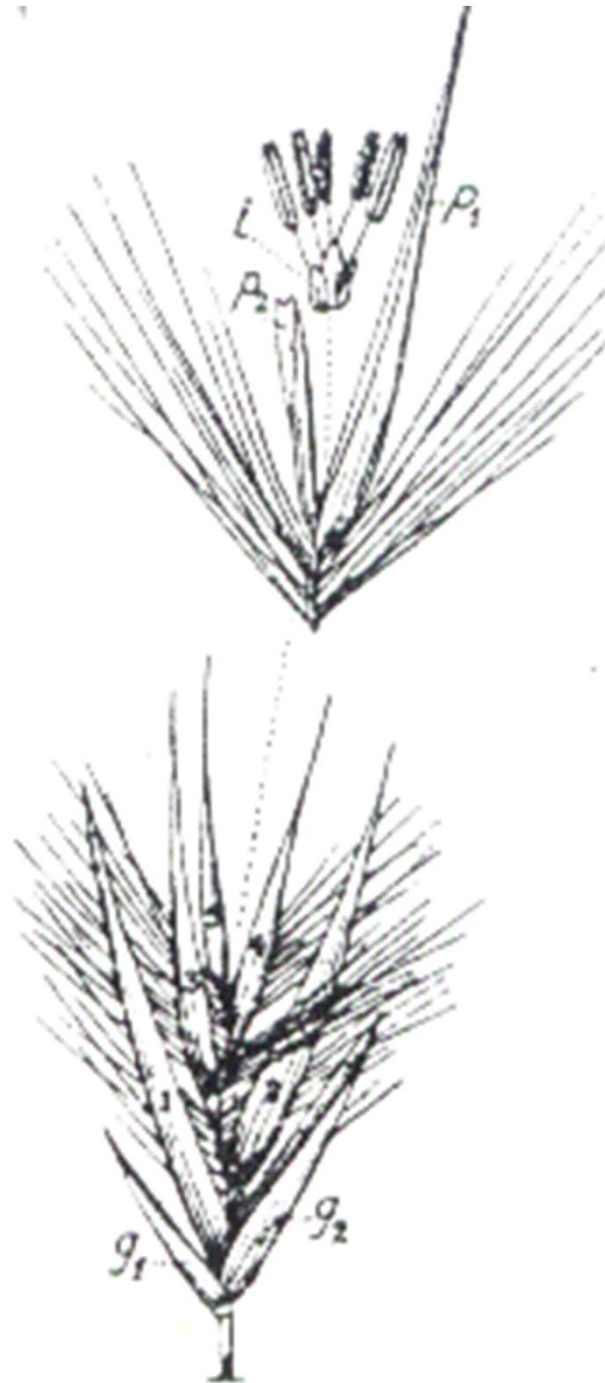
**Glume 1!**



**Phragmites sp.**



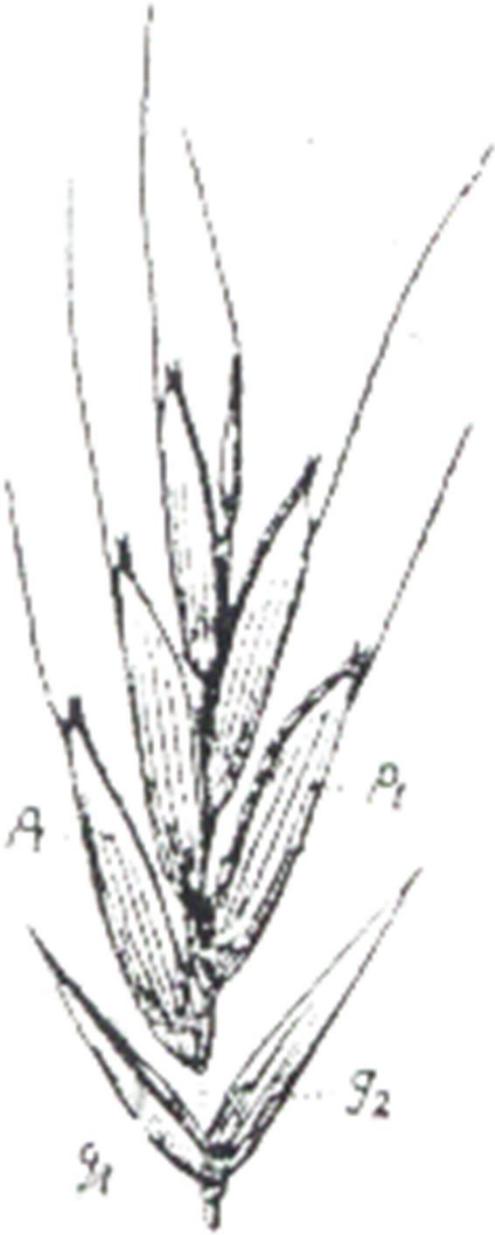
**Os klasića sa dugim  
dlakama!!!**



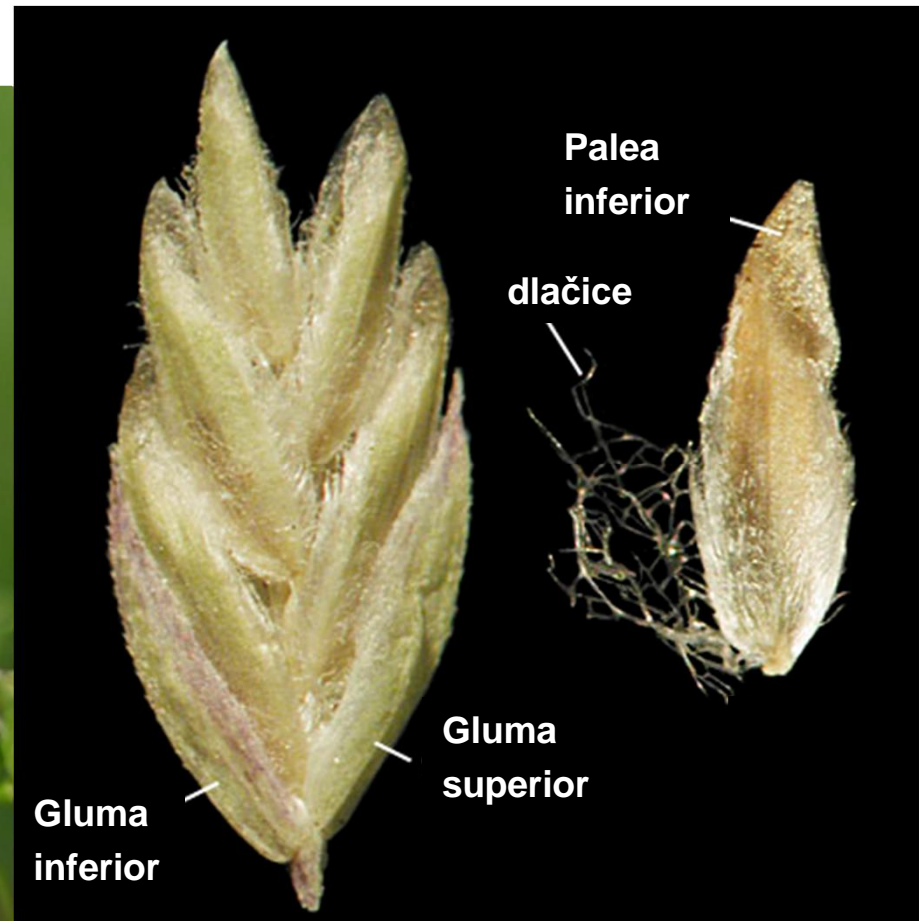
**Briza sp.**



**Bromus sp.**

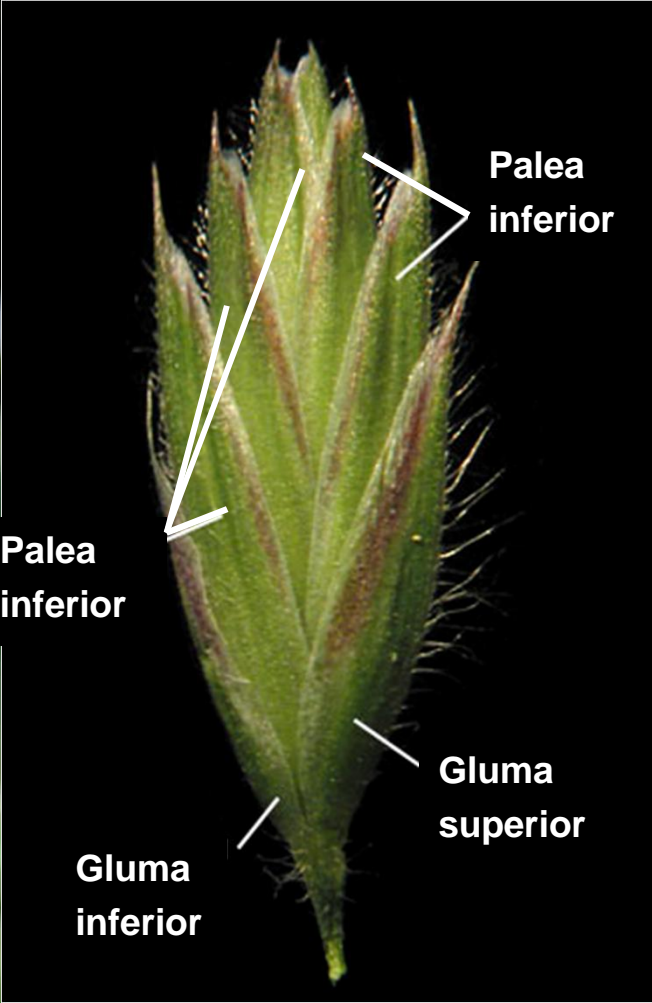


# Poa sp.





**Dactylis glomerata**



# Sparganiaceae



**Sparganium erectum**

**P2 A2  
P2 G1**

# Typhaceae

$P^\infty A_3, P^\infty G_1$



# Areceaceae



*Chamaerops humilis*



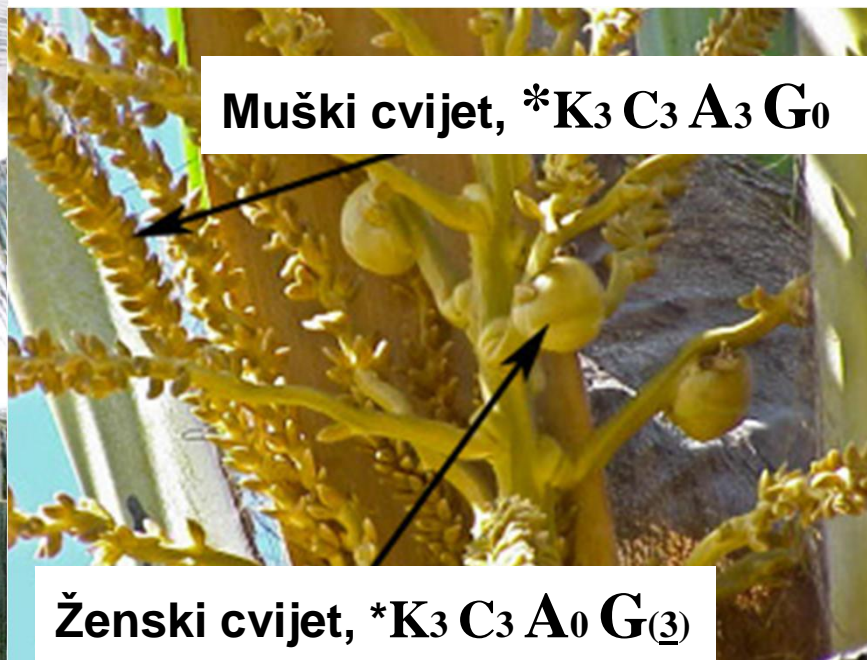
\* $P_{3+3} A_{6^{st}} G_{(3)}$

\* $P_{3+3} A_{3+3^t} G_0$





**Cocos nucifera- kokos**



# Commelinaceae



*Commelina communis*

↑ **K<sub>3</sub> C<sub>3</sub> A<sub>3+3</sub> G<sub>(3)</sub>**

# Bromeliaceae



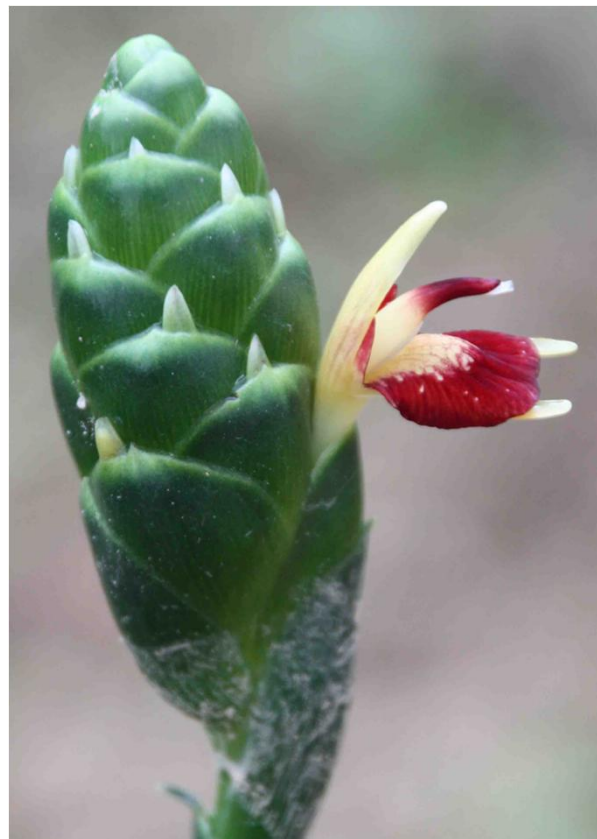
**\*K<sub>3</sub> C<sub>3</sub> A<sub>3+3</sub> G/(3)**

**Ananas sativus**

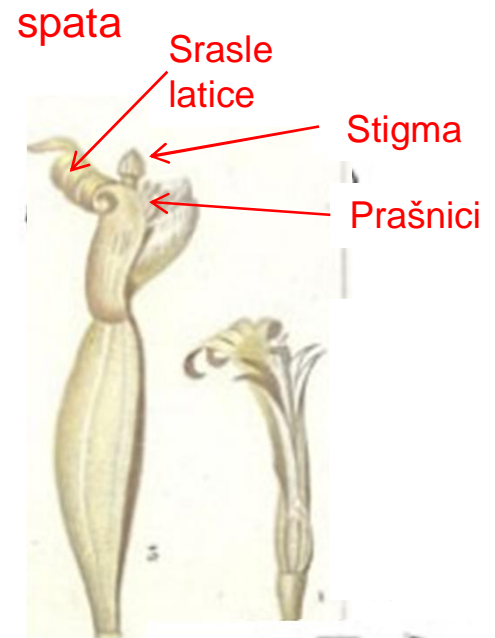
# Zingiberaceae



**Zingiber officinale**



# Musa x paradisiaca, Musaceae

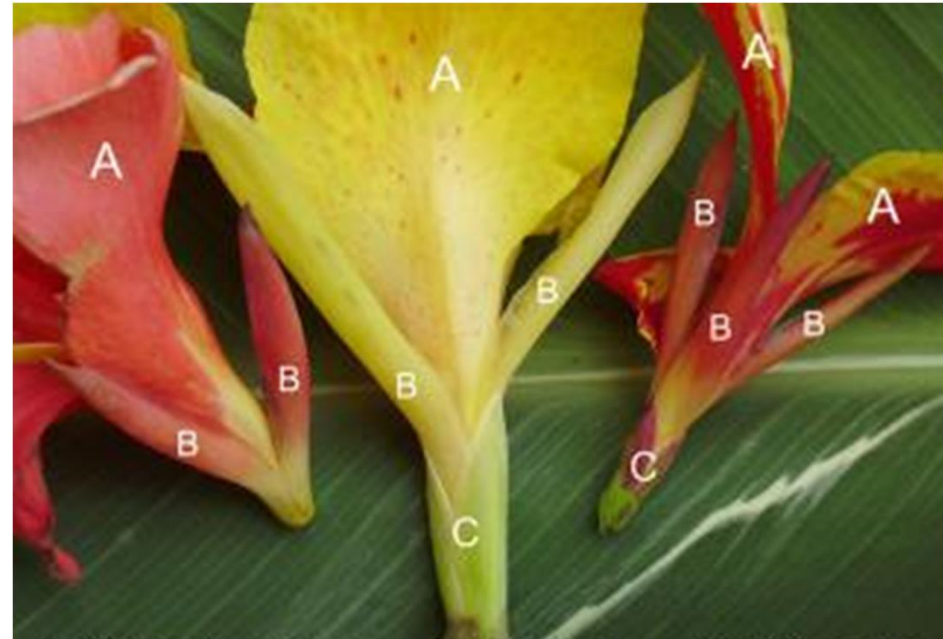


$$P_{(3+2)+1}, A_{3+3}, G_{0^{\cdot}}$$

$$P_{(3+2)+1}, A_{0^{\cdot}}, \overline{G}_{(3)^{\cdot}}$$

$$P_{(3+2)+1}, A_{3+3}, \overline{G}_{(3)^{\cdot}}$$

# Cannaceae



A= Staminodije, B= Krunica, C= Čašica

*Canna* sp.

# Strelitziaceae

$P_{3+(3)} A_{3+2} \underline{G}_{(3)}$



**Strelitzia sp.**